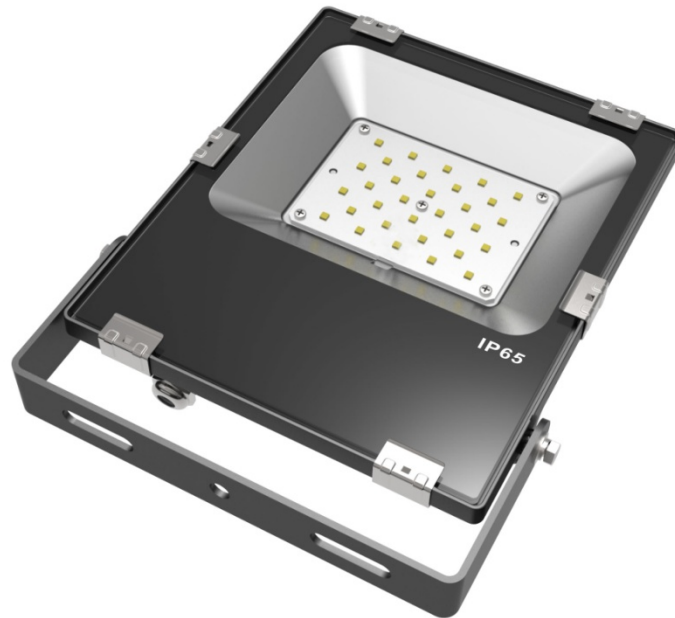


LEDLUMEN[®]
LED Technologie

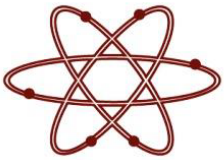
Your brightness is our success!

LL-TG3B-1



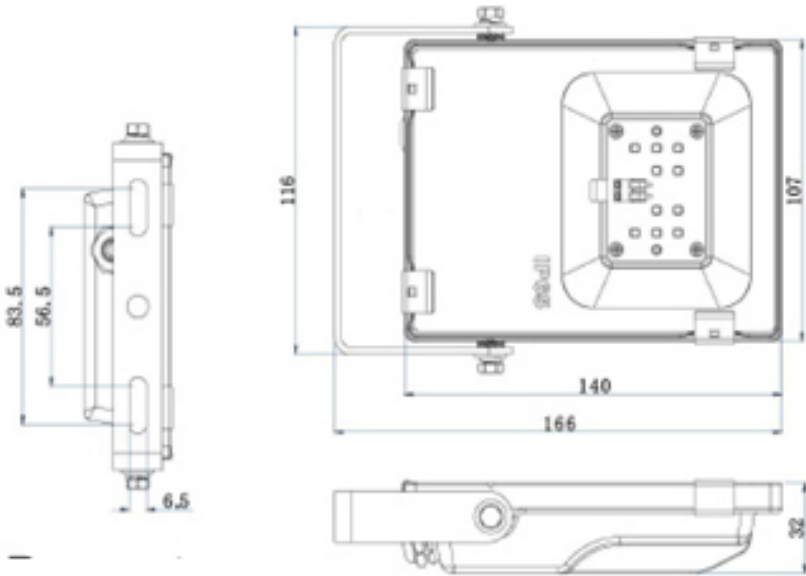
TECHNISCHE DATEN			
Model		LL-TG3B-1	
Product Specification	Material	AL + Glass	
	LED Type	SMD-3030	
	LED Quantity	10 pcs	
Electrical Parameters	Power	10W	
	Input Voltage	100-240VAC	
	Output Voltage	30-36VDC	
	Power Efficiency	>0.9	
Optical Parameters	Luminosity	1000Lm±10%	
	Illumination	5m	19Lux
		10m	5Lux
		15m	2Lux
	Light Efficiency	100Lm/w±10%	
	CRI	>70	
	Color Temperature	4000K/5000K/6000K	
Beam Angle	110°		
Package	Package Size (mm)	425*415*255mm	
	QTY of Package	36 pcx	
	Piece Weight (Kg)	0.61 kg	
	Net Weight (Kg)	21.96 kg	
	Gross Weight (Kg)	22.94 kg	
Lamp Type		III	
Installation		Bare	
IP Rate		IP65	
Lifespan		50.000h	
Working Temperature		-25° - +50°	





LL-TG3B-1

Bemaßung



- Alle Lampen sind mit Meanwell Driver ausgerüstet
- Garantiezeit: 5 Jahre
- Schutzklasse IP65

